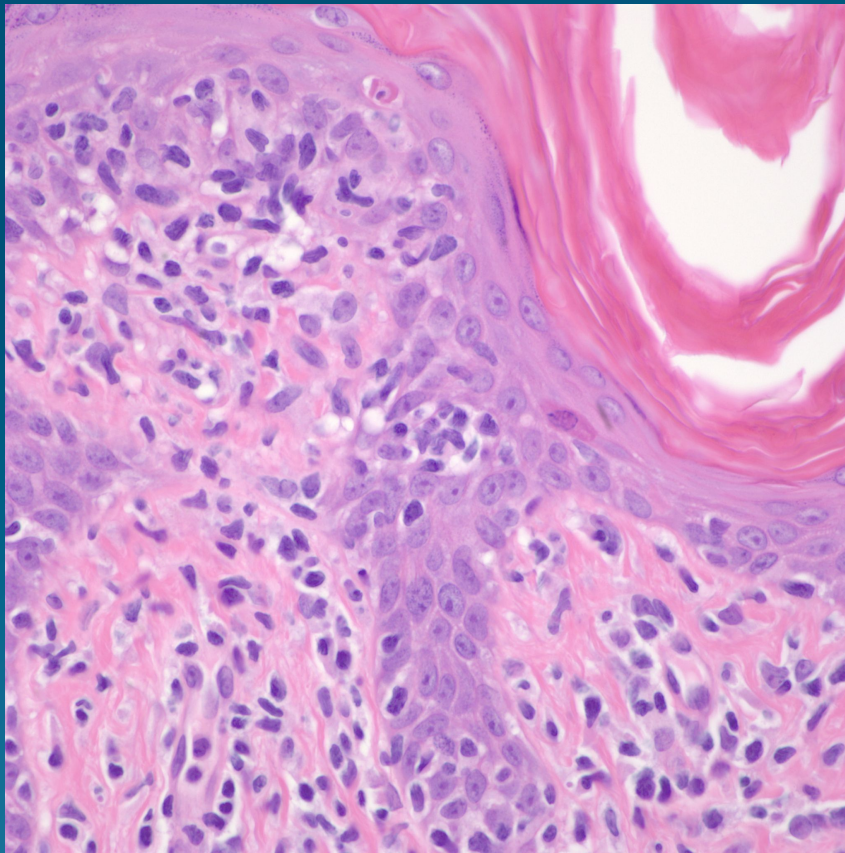


What is the best diagnosis?

- A. Mycosis fungoides
- B. Langerhans cell histiocytosis
- C. Urticaria pigmentosa
- D. Diffuse large B-cell lymphoma
- E. Lymphomatoid papulosis

Mycosis fungoides

Pearls



- Atypical intraepidermal lymphocytes with hyperchromatic and hyperconvoluted nuclear contours
- May have perinuclear halos
- Pautrier microabscesses with intercalation of basal keratinocytes with atypical lymphocytes
- Confirm with IHC
- Confirm with clinical presentation